

INFERNO MOBILE SYSTEM

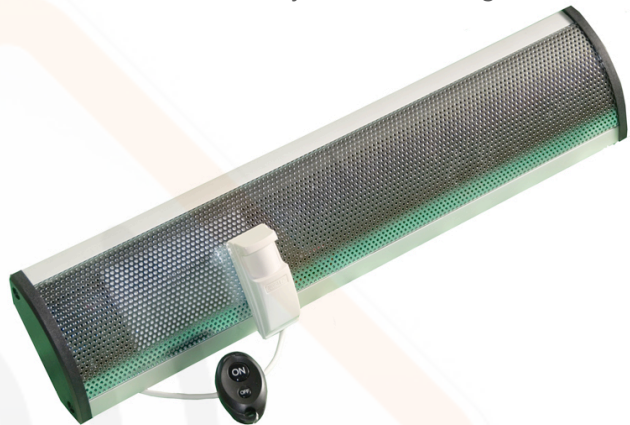
STAND-ALONE SYSTEM : DATA SHEET

- ⇒ renders the protected area uninhabitable & forces intruders to retreat immediately.
- ⇒ significantly reduces costs of intrusions by limiting the intruders' time inside.
 - ⇒ generates an utterly intolerable sound spectrum, broadcast at 125dB.
- ⇒ is armed/disarmed via remote, and detects intruders via the integrated PIR sensor.
- ⇒ a stand-alone system that operates without the existence of a conventional alarm system.
 - ⇒ does not require mains power.
 - ⇒ ideally suited to mobile/temporary installations.
 - ⇒ ultra-high Swedish quality & durability.

The Inferno Mobile System consists of an Intenso sound barrier, an infra-red motion detector and two remote control units for arming/disarming. An effective solution for a huge array of installations, from temporary storage spaces/offices to cargo vehicles, storage sheds to insecure and/or temporary storage facilities.

Once the sound barrier's internal battery is charged, the system can be armed via the remote, and can in fact operate for up to 3 days without any external power supply whatsoever. The sound barrier emits an audible chirp upon arming/disarming to indicate its status. Requiring only a 12V feed to maintain the internal battery, it can operate without mains power for months when connected to a suitable 12V source. It is capable of protecting up to 70m² - larger areas

can be protected by several units. Inferno sound barriers protect premises and objects that demand a heightened level of security. They are typically deployed in situations where conventional security equipment has/will fail to provide sufficient protection. The intruder depends on the "window of opportunity" that exists between detection and arrival of security personnel. By rendering an area uninhabitable, the sound barrier destroys this window and with it, the intruder's ability to inflict damage and loss.



TECHNICAL SUMMARY

| | |
|------------------------|------------------------|
| Protective capability: | Up to 70m ² |
| Dimensions: (mm) | 685 x 106 x 40 |
| Weight: | 1.7kg |
| Frequency range: | 2 - 5kHz |
| Acoustic effect: | 125 - 127dB (A) |
| Battery backup: | 9.6V,1800mAh,Ni-MH |
| Battery lifetime: | 3 years |
| Power consumption: | 12-16V DC, <150mA |
| Runtime: | > 30 minutes |
| Temperature range: | -10 to +60°C |

Forcing the intruder to exit immediately, empty handed and without confrontation, is the ultimate solution in

Inferno - intolerable to intruders.