

# INFERNO MICRO

## SOUND BARRIER : DATA SHEET

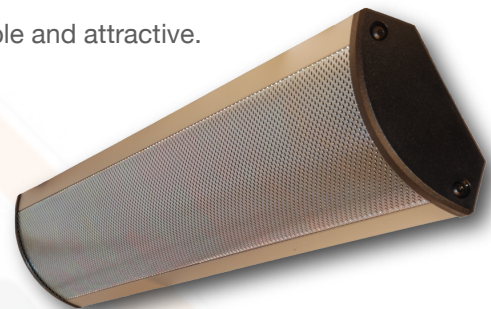
- ⇒ renders the protected area uninhabitable & forces intruders to retreat immediately.
- ⇒ significantly reduces costs of intrusions by limiting the intruders' time inside.
  - ⇒ generates an utterly intolerable sound spectrum, broadcast at 122dB.
- ⇒ compatible with all existing alarm systems, simple to retrofit and install.
- ⇒ ultra-high Swedish quality & durability.

The Micro is essentially a smaller version of its all conquering brother, the Intenso. It boasts an identical sound generator, however having just half the number of transducers (speakers) as compared the Intenso, it is significantly smaller. Its diminutive size makes it ideally suited to installations where space is at a premium - for example inside display cases, server cabinets and other confined areas where high value items are located. It is often installed in vehicles where the interior volume simply doesn't demand the sheer power of the larger and more powerful Intenso.

Inferno sound barriers protect premises and objects that demand a heightened level of security. They are typically deployed in situations where conventional security equipment has/will fail to provide sufficient protection. The intruder depends on the "window of opportunity" that exists between detection and arrival of security personnel. By rendering an area uninhabitable,

the sound barrier destroys this window and with it, the intruder's ability to inflict damage and loss.

The Micro's patented sound generator has recently been optimized, resulting in substantially improved runtime and a significant reduction in power consumption. Designed, manufactured and assembled in Sweden to ultra-high standards, the Micro is encased in a rugged aluminium and plated steel shell, making it both durable and attractive.



### TECHNICAL SUMMARY

Protective capability:	Up to 35m <sup>2</sup>
Dimensions: (mm)	452 x 106 x 40
Weight:	1.4kg
Frequency range:	2 - 5kHz
Acoustic effect:	122 - 124dB (A)
Battery backup:	9.6V, 1800mAh, Ni-MH
Battery lifetime:	3 years
Power consumption:	12-16V DC, <150mA
Runtime:	> 30 minutes
Temperature range:	-10 to +60°C

The cost of an intrusion is directly proportional to the time available to the intruder. Forcing the intruder to exit immediately, empty-handed and without confrontation, is the ultimate solution in any intrusion.

**Inferno - intolerable to intruders.**